



# One Good Turn

## Coulee Region Woodturners



Chapter of the American Association of Woodturners

January 5 2011

[www.crwoodturner.com](http://www.crwoodturner.com)

Volume 11, Issue 1

### 2x4 Challenge Winners.



Best Of Show



Most Abstract



Most Artistic



Most Technical

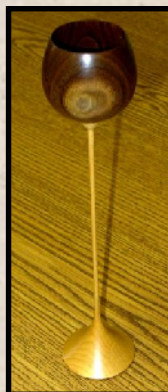
## A New Year and 10th Anniversary Of The Coulee Region Woodturners.



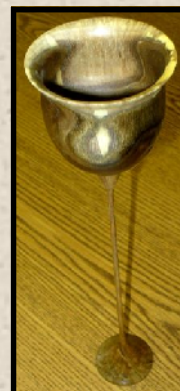
Rich Egan



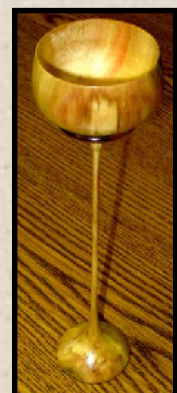
Tom Marz



Bob Patros



Jim Frank



Jack Fitzpakrick

**CRW Mission Statement: To promote, to educate, and to inspire ourselves and others in the fine art of turned wood.**

**CRW Officers**



**President**

**Jim Frank**

**608-781-8092**

**[jhfbeat@centurytel.net](mailto:jhfbeat@centurytel.net)**



**Vice President**

**Bob Patros**

**608-788-6839**

**[ripatros@gundluth.org](mailto:ripatros@gundluth.org)**



**Secretary,  
& Newsletter**

**Phil Miller**

**608-792-1497**

**[pmiller010@centurytel.net](mailto:pmiller010@centurytel.net)**



**Treasurer**

**Gary Friemann**

**507-498-5692**

**[gfriemann@merchantbank.com](mailto:gfriemann@merchantbank.com)**

**Technical Advisors**



**Program Director**

**Paul Woelper**

**507-895-1036**

**[pswoelper@aol.com](mailto:pswoelper@aol.com)**



**Club photographer**

**John Griffiths**

**608-248-2782**

**[griff@mwt.net](mailto:griff@mwt.net)**



**Librarian**

**Jack Fitzpakrick**

**608-781-8167**

**[jcfitz@charter.net](mailto:jcfitz@charter.net)**



**Webmaster**

**Ken Grunke**

**608-625-2412**

**[kengrunke@gmail.com](mailto:kengrunke@gmail.com)**



**Tool Czar**

**Clyde Cassell**

**608-654-5727**

**[dovetailfarm@yahoo.com](mailto:dovetailfarm@yahoo.com)**



**Asst. Librarian**

**Paul Schumacher**

**507-452-2482**

**[pschumacher@winona.edu](mailto:pschumacher@winona.edu)**

**CRW Club Mentors**

**All areas of turning and finishing. Duane Hill  
Onalaska, WI. 608-783-0883 [dlh@dairynet.com](mailto:dlh@dairynet.com)**

**Boxes & surface enhancement. Pam Reilly  
Elgin, MN. 507-876-1195 [reilly@embarqmail.com](mailto:reilly@embarqmail.com)**

**Experimental techniques, tool making, and metalworking. Ken Grunke  
La Farge, WI. 608-625-2412 [kengrunke@gmail.com](mailto:kengrunke@gmail.com)**

**Spindle turning. John Fisher Holmen, WI. 608- 526-4692 [minnow1974@charter.net](mailto:minnow1974@charter.net)**

**Fundamentals. Bob Patros La Crosse, WI. 608-788-6839 [ripatros@gundluth.org](mailto:ripatros@gundluth.org)**

**Segmented Turning. Phil Miller La Crosse, WI. 792-1497 [pmiller010@centurytel.net](mailto:pmiller010@centurytel.net)**

The Prez. Saz:

Happy New Years and Happy WoodTurning to All.

2011 is starting to look like a calendar of opportunities for the members of CRW to get involved with. We had our first officers meeting and 5 questions were first asked of the Officers and Advisory Staff. They are the following:

1. What in your view is the responsibility of the position you hold?
2. In the position you hold, what do you want to accomplish within that positions responsibility?
3. What brought you to the club and what did you expect to gain from the club?
4. Did the club meet your expectations?
5. In your view, what do we need to accomplish to raise the enthusiasm and excitement and operation of C. R. W.

Our first meeting started at 6:45 PM and ended at 10:00 PM. We ran out of time and only just touched on some of the issues that face us. I have never seen such excitement in a business meeting as I witnessed last night. It was Dynamic.

Our objective at this meeting was to open lines of communication and to share the opportunities facing the club with the leadership and NOW YOU the members of CRW. As time marches forward, those opportunities will be made clear.

TO HAVE THIS HAPPEN, FEED BACK IS NEEDED FROM YOU THE MEMBERS OF C. R. W..

So, I ask you to look at question 5, think back on your experiences with CRW and be willing to offer those views and ideas to your officers and advisory group of CRW. As your requests and requirements are made known to us we will act on them and bring those suggestions back to the floor for discussion and passage of the measures agreed upon by you.

This is my promise to you as President of CRW.

**The Officers and Advisory Group's most common answer to question 5:**

More hands on training using club equipment within the meeting agenda.

Don't be timid or nervous about showing your work. We all have a starting point. Be willing to do more, show more and interact more with club events.

You can send your ideas or comments by mail or internet to me or my fellow officers and advisors. My E-mail address is: [JHFBEAR@CENTURYTEL.NET](mailto:JHFBEAR@CENTURYTEL.NET)

Knowledge is king and speaking up is a right and obligation of all members of CRW. We are a skilled group of people that love to work with wood and turn with enthusiasm and all have ideas and desires when thinking of woodturning. Please make those ideas and desires known to us.

Remember the CRW Mission Statement: It is the mission of the Coulee Region Woodturners to promote the art and craft of woodturning to people of all ages and walks of life. Preservation of this ancient craft, through its evolution into the art world of today should be shared without prejudice and passed to our younger generations so they too may experience the pleasure and joy of such diversified skill.

I look forward to the New Year and the opportunities that lay ahead being your Club President.

Jim



Hello Turners.

Phil here with a New Year I have taken off on a new look for our news letter. My goal is to bring more information that others in the club might find useful when they look at the pictures of the work that you bring to display.

So when filling out the card for your piece let us know what: **Please Use A Sharpie**

Kind of materials you used,  
The dimensions of your work,  
The finished you used,  
How much time you have invested in this piece,  
and anything that might be of interest to the membership.

When I think about the amount of time that we invest into making a piece, take the time to describe what your piece is about and how it came to be what it is.

Take pride in your work and one thing that you might want to reflect on is, what did your first piece look like?

Where has that piece taken you?

When I think about this I go back to High School (1963 to 1967), I was a catcher for hardball. Now what would a ball player make on a lathe? Well, I took a piece of ash and turned a base ball bat, that bat, I used through High School. When I was in the Army, one of my brothers wrote me to tell me that he broken the bat.

So when you think about where woodturning has taken, you please share this with another member or if you want share it with your fellow members in the news letter, or at the meeting.

When you joined this club what did you want to get from being a member? When you come to the meeting take the time to meet new folks and who knows where that could take you.

Phil



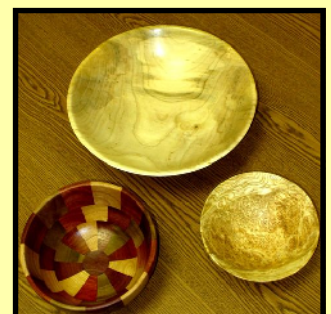
**Jim Frank**



**Scott Hobson**



**Lyle Bodensteiner**



**Phil Miller**



**January's Meeting** There has been a change in the topic for the January meeting. Instead of threading, Duane Hill will demonstrate different methods of adding color to your work piece. This will include dyeing, painting, airbrushing, etc.

Jim Frank and Duane Hill were be at A-Line Tool on Saturday January 8th 9am to 12am Topic Lathe tool sharpening. Bring a tool or two to sharpen this will be some hands on.



At the Decembers meeting we had some extra treats, so thank you to all that brought the treats. This our club and there is always a lot of things going on. Step up and get involved. Do you have a tip to share or an idea for a demo, let us know. When the officers and the technical advisors are planning for up and coming demo's it might be your idea that we need. You can wait for things to happen, or you can make things happen. Phil



**Ansel Hearn**



**Odel Anderson**



**Rich Egan**



**Duane Hill**

**Dan Wilson**



**Gary Friemann**



**Jim Klenski**

**Upcoming Meetings** – February 2011 – Hands on Sharpening session. Bring one or two tools that you are having trouble sharpening.

**Open Shop Night** – Open Shop Night is held Tuesdays at Duane Hill's shop, 808 Quincy in Onalaska. The topic is free format and anything applying to woodturning goes. This is a great chance to ask questions, try new techniques or just BS about woodturning. Please call, 608-783-0883, if you plan on coming over to make sure Duane will be there.

**Monthly Tip** – This is a repeat tip. Now that Christmas is over, save the foam wrappings on any electronics you received. Cut them into 3" x 3" squares. These make great applicators for applying CA glue as a finish. The CA glue will not stick to the foam. By using this as an applicator, the CA glue will not stick to your fingers. Just remember to keep the CA portion of the foam away from your fingers.



## **Attention**

We have the group buy going on with a dead line of mid January. We will have forms at the meeting, If you won't be there, and want to take part e-mail or call Clyde Cassel; [dovetailfarm@yahoo.com](mailto:dovetailfarm@yahoo.com) or 608-654-5727

**Woodturning Classes at WTC** – Intermediate woodturning will meet on Wednesday night from 6-9 PM. Beginning woodturning will meet on Friday nights from 6-9 PM. The Intermediate class runs from February 2, 2011 thru March 23, 2011. The Beginning class runs from February 4, 2011 thru March 25, 2011.



Tom Marz

Well 2011 is here, have you decided what you will be making for the Up Nort Huntin Camp? Dead line is approaching fast!

Jennifer & Dan Wilson Have some interesting pieces made for the collaborative project for the AAW gallery. Small pieces that will decorate the cabin. Then the acrylic pen nice combo of plating and blank.



The 2x4 challenge was a interesting project. We had 48" length to work with and after that just your imagination. Prizes were gift cards that the club had receive from Craft Supplies USA.

Winners.

Best Of Show Dennis Green

Best Abstract Jim Frank

Most Artistic Denis Falch

Most Technical Rich Egan



**2x4 Challenge** The challenge brought some interesting creations. From a star ship to an urn. I think the angle did a good job showing off the crafty ideas that members made. Thanks to all





## Club Calendar Events & Club Meetings For 2011

**January Meeting 1/15/2011 Duane Hill**

**Officers Meeting 1/6/2011**

**February Meeting 2/19/2011**

**Officers Meeting 2/3/2011 Location Jim Franks Onalaska, WI.**

**March Meeting 3/19/2011**

**Officers Meeting 3/3/2011**

**April Meeting 4/16/2011**

**Officers Meeting**

**May Meeting 5/21/2011**

**Officers Meeting**

**June Meeting 6/18/2011**

**AAW St. Paul, MN - June 24 - 26, at the St. Paul River Centre**

**La Crosse RiverFest**

**July Meeting 7/16/2011**

**August Meeting 8/20/2011**

**Great river folk festival UWL**

**September Meeting 9/17/2011**

**October Meeting 10/15/2011**

**Holmen Empty Bowl**

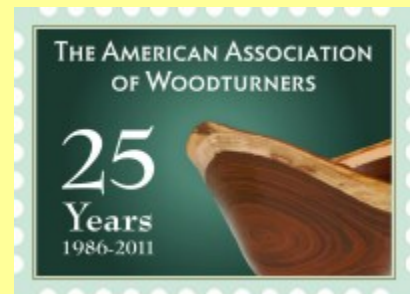
**Festival Of Trees**

**November Meeting 11/19/2011**

**Veterans Day 11/11/2011**

**Pens For Troops**

**December Meeting 12/17/2011**



**25th Annual AAW symposium, to be held in Saint Paul, Minnesota, Friday June 24 through Sunday June 26, 2011, at the [Saint Paul RiverCentre](#).**

Wendell Ziegler had a discussion on how he does some of the pieces that he makes. Wendell's likes to use things in nature that until now you wouldn't think of using. Like cutting up walnuts or using corn cobs. Brilliant is my first thought, great job. When your looking at doing something different, and out of the norm that's when the creative thoughts come to the surface. Great job Wendell and to the rest of the members do you have a different idea that you might like to share? Step up and share it maybe you have a special technique that you could share, not a whole meeting but maybe 10-15 minutes. Maybe a meeting with 2-3 different discussions to the members. Just a thought.





## We Need Your Help, And March Is Getting Closer!

**We need some help members, time is slipping away. This is a club project, and we need your commitment.** At this point in time, 2 bunk beds are being made and Ansel will work on the table. We need many more turners working on this project. Some ideas for trappings at 1" to the foot are:

1. Wood box with stacked wood (1-1/4" wide by 4" long by 3" high)
2. Two easy chairs (Scaled to 1" to the foot)
3. 4 table chairs (Scaled to 1" to the foot)
4. Beer Cans (6 Pack)
5. Whisky Jug (Old Time Ceramic)
6. Deer Horns
7. Canoe Bob P
8. Dishes (1-1/4" diameter X 4)
9. Pots (1-1/4" diameter X 2)
10. Wall Cupboards (2-3" long by 3" high by 1-1/4" deep)
11. Cloth coverings for openings on all cabinets
12. Foot stools for the two easy chairs
13. Pancakes to fit plates
14. Window (with Curtains) Phil M
15. Door with hinges (with door frame) Phil M
16. Carved Moose Head

And many more ideas from the members. We have some things being worked on and we need your help, so Volunteer and take part this is a team effort and a fun project. We have less than 5 months till March contact Duane Hill [dlh@dairynet.com](mailto:dlh@dairynet.com) or Jim Frank: [jhfbear@centurytel.net](mailto:jhfbear@centurytel.net)





**JAN 8<sup>TH</sup>**

**LATHE-TOOL MAINTENANCE & SHARPENING**

**BY JIM FRANK**

**9:00 AM TO 11:00 AM**

**JAN 22<sup>ND</sup>**

**LATHE SEMINAR – SEGMENTED TURNING (HOW TO)**

**BY PHIL MILLER**

**9:00 AM TO 11:00 AM**

**FEB 12<sup>TH</sup>**

**STAINING AND FINISHING**

**BY JIM COX**

**9:00 AM TO 11:00 AM**

**FEB 26<sup>TH</sup>**

**KREG Jig PLUS DOVETAILING**

**BY MIKE JAEKEL**

**9:00 AM TO 11:00 AM**

**MAR 5<sup>TH</sup>**

**LATHE SEMINAR – TURNING BOWLS/VASES**

**BY JIM FRANK**

**9:00 AM TO 11:00 AM**

**MAR 25**

**DELTA DAYS – EXTRA DISCOUNTS 8:00 AM TO 5:00 PM**

**MAR 26**

**DELTA DAYS – EXTRA DISCOUNTS 8:00 AM TO 12:00 PM**

Rockwell 14" Wood Cutting Band Saw Model 28-200, with enclosed stand. ½ hp motor. Well maintained, works great. \$250.00 With Delta rip fence, \$300.00 (fence new \$108).



**Items For Sale Bob Raasch**

**608-769-3833 [raaschb@charter.net](mailto:raaschb@charter.net)**



Rockwell 46-111 Wood Lathe (11/14) swing. 36" between centers, M2 taper, 1/3 hp ball bearing Rockwell motor, 4 speeds, pulley drive. Includes original metal stand/with wheels, 4 prong spur center, plain dead center, 2-3" face plates, 6" face plate 6" offset tool rest, 4" and 12" straight tool rests,. No turning tools. \$250.00

Pro Mate Drill press, floor model, 16 speed (200-3600rpm), belt drive. ¾ hp motor, ¾" keyed chuck, table can raised and lowered, and rotated, spindle depth lock \$225.00

COULEE REGION

WOODTURNERS

LA CROSSE, WI

Phil Miller / Editor

2831 Onalaska Ave.

La Crosse, WI 54603

Phone: 608-792-1497

Email: pmiller010@centurytel.net

**"A Turn For the Better"**

**Next Meeting  
Onalaska Community  
Center Saturday,  
January 15 2011 at 9 am.**

Here's a map to help those who aren't sure where we meet. It's the Onalaska Community Center at the intersections of Quincy & 6th Ave North in Onalaska, Wisconsin. 608-783-9290

We'll start the program promptly at 9am, so get there early to avoid getting a Uecker Seat.

We'll have coffee, so  
Chocolate donuts are  
ALWAYS  
Welcomed.

